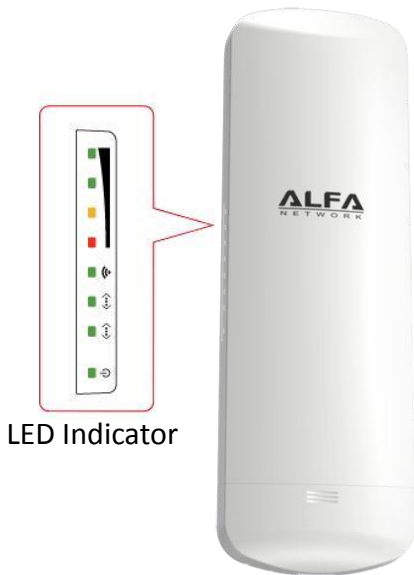


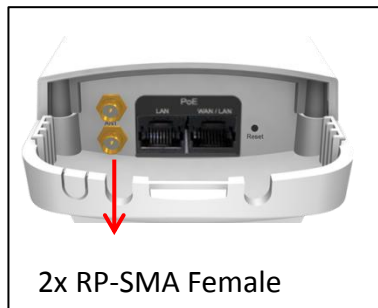
N5C

802.11an 5GHz Long-Range Outdoor AP/CPE 2x RP-SMA Female Connector

N5C is a cost effective 802.11an 2x2 MIMO outdoor AP/CPE operating in a 5GHz band that is also compliant with IEEE 802.11a standard. It build-in external 2x RP-SMA female connector for all kind of applications and antennas with dual Ethernet ports. The N5C support passive PoE allowing easy installation without any environment limitation.



LED Indicator



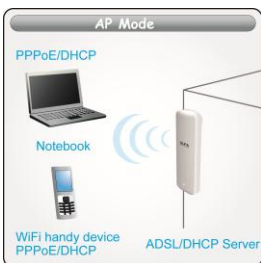
2x RP-SMA Female



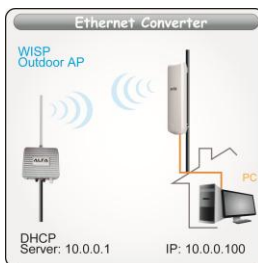
Optional Accessory:
External Antenna Holder

Applications:

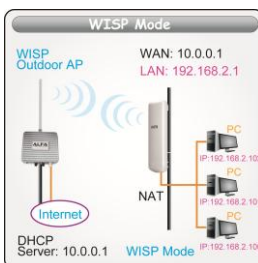
➤ Access Point



➤ Client Mode



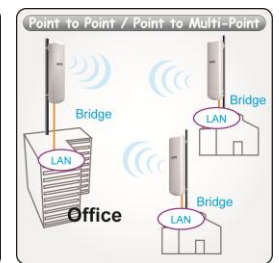
➤ WISP Mode



➤ Router Mode



➤ Point To Point



N5C

802.11an 5GHz Long-Range Outdoor AP/CPE 2x RP-SMA Female Connector

Specifications:

CPU	Atheros AR7240				
Flash	8MB				
RAM	32MB				
Interface	2 x RJ45 & 1x Reset				
Antenna	External 2x RP-SMA Female Connector				
Output Power (dBm)	802.11a	6Mbps	29 ± 2	24Mbps	29 ± 2
		9Mbps	29 ± 2	36Mbps	27 ± 2
		12Mbps	29 ± 2	48Mbps	25 ± 2
		18Mbps	29 ± 2	54Mbps	24 ± 2
	802.11n	MCS0	29 ± 2		
		MCS3	29 ± 2		
		MCS8	29 ± 2		
		MCS9	29 ± 2		
		MCS12	28 ± 2		
		MCS15	23 ± 2		
Sensitivity (dB)	802.11a	6Mbps	-92	24Mbps	-81
		9Mbps	-89	36Mbps	-78
		12Mbps	-86	48Mbps	-75
		18Mbps	-83	54Mbps	-73
	802.11n	MCS0	-94		
		MCS3	-87		
		MCS8	-93		
		MCS9	-91		
		MCS12	-82		
		MCS15	-73		
Operation Mode	AP	Client	WISP	WDS Bridge	
Software	Site Survey Bandwidth Control SNMP v1/v2 support adjustable output power Distance Adjustment Radius (802.1x)				
Mounting	Pole Mount (Standard)		Adjust Angle Mount (Option)		
Size	TBD	Weight	TBD		
PoE Required	12V~24V * depends on cable length *				

Standard Package:

- N5C unit
- Installation Guide
- PoE Power Adapter
- Plastic Strips



***Cable, Antenna and Antenna Holder sold separately**

